

Ritter 204 Examination Table

The Ritter 204 Manual Exam Table. Featuring the latest in design, comfort and functionality in a manual exam table, it truly offers efficient patient care.



Features, such as one-piece seamless drawers have easy-to-clean rounded edges and are designed to contain spilled fluids, keeping them from other areas of the table, thereby improving infection control. The ergonomic design of the upholstered top is as soft and comfortable as it looks, leaving your patients feeling more relaxed. The one-piece, seamless upholstered top can be easily removed without tools, allowing a thorough cleaning or a quick upholstery color change. We increased the size of the footstep to allow patients to feel more secure and get on the table more confidently... putting minimal strain and stress on physicians or their staff. The step has an easy-to-clean, slip resistant surface with rounded edges for added security. Three spacious side drawers provide plenty of storage volume for gowns, drapes, and other items, yet are made to help organize your assortment of smaller supplies and bulk supplies. In addition, there are two front drawers for easy access to items during pelvic exams. The Ritter 204 is designed to safely support 500 pounds. Available in 7 standard Ritter colors

4443-204 Ritter 204 Examination Table

Midmark 604 Full-Featured Examination Table

The 604 not only looks great... but is the best exam table on the market.

The 604 is user-friendly as its pneumatic cylinder assists in easily placing the counterbalanced top in an infinite number of positions. Release handles on both sides of the top section make positioning easy. A unique



“flex” storage concept allows changing to either right-hand or left-hand access without the use of tools. Unique elastomeric material stretched over a seat cut-out is designed to enhance patient comfort for a “chair-like” feel in an exam table. The upholstery is removable and available with optional heater. The Exam Assistant™ Fold-Down Drawer System provides an area to store basic pelvic and examination supplies at your fingertips. Its unique fold-down front can also turn into a work shelf for examination assistance. A large foot step, with a new rubberized, easy-to-clean pad makes this footstep slip-resistant. The large footstep has bright yellow edging to assist the visually impaired in seeing the step edges clearly. The solid construction of this table can support larger patients up to 500 pounds, as well as provide many years of use. Available in 6 solid colors, 6 designer patterns and 6 ultra-leather upholstery colors.

4443-604 Midmark 604 Full-Feature Examination Table

Ritter 222/223 High-Low Power Examination Table

The new industry standard, the Ritter 222/223 lowers to 18 inches, making it easier for patients to get on the table... without putting excess strain on the patient, physician or staff. The incredible low height makes the Ritter 222 accessible for all patients such as elderly, expectant mothers or patients with disabilities. Once a patient is on the table, with a touch of the foot control, the Ritter 222/223 allows precise patient positioning with minimal effort on everyone's part. Dimensions: 26.5" W x 57.5"L (Extends to 74.5"), Height Min. 18", max. 37". Available in 7 different colors.

4443-222 Ritter 222 High-Low Power Examination Table

4443-223 Ritter 223 High-Low Power Examination Table



Ritter 222

Ritter 264 Dressing Nook

The Ritter 264 Dressing Nook gives your patients the privacy they want, yet at 6 3/4" deep when closed, you'll hardly know it's there. It looks like a door. But open it, and it becomes a three-walled dressing chamber. There's even an acrylic mirror and room for a chair. Available in 7 standard Ritter colors.

4443-264

Ritter 264 Dressing Nook



Midmark 75L and 75LP Full-Featured Procedures Tables

To help keep you and your staff fresh and alert all day, the Midmark 75L does the heavy work. Full eight-way power,

essential low height, unprecedented patient comfort and a multitude of efficiency features significantly improve your practice, making the Midmark 75L the table of choice. With a low height of 19 inches and an exclusive Premium Comfort System(tm), the 75L provides easy access for patients who are pregnant, elderly, or have disabilities. This drives efficiency into your practice by enabling patients to access the table themselves, while helping you and your staff position patients quickly and efficiently. Not only can the Midmark 75L be used in Family and General Practice, but also in OB/GYN, Internal Medicine, Dermatology, Plastic Surgery, Colon and Rectal, General Surgery, and other specialties. And, with over 30 accessories to choose from, you have the flexibility of ordering just what you need. Our goal is to make your practice more productive by offering the Midmark 75LP model, which includes the additional feature of programmability. You can simply program the table to your four favorite positions, and it will move quickly and precisely, every time. Available in 6 solid colors, 6 designer patterns and 6 ultra-leather upholstery colors.

4443-75-021

Midmark 75LP Procedure Table

4443-75-020

Midmark 75L Procedure Table

Ritter 75e Procedures Table

As the practice of medicine changes, more procedures are being performed in the office than ever before, making efficiency essential. Sometimes positioning patients can be a difficult task when dealing with the less mobile, elderly, and special needs patients. The Ritter 75e



Power Procedures Table, with its 22.5" low height and multi-positioning capabilities, improves office efficiency by allowing you and your staff to easily position patients with the touch of a button; reducing the likelihood of fatigue, back and neck strain, and workplace injury. The Ritter 75e is a power procedures table with basic features, making it very affordable. Better yet, the Ritter brand has been providing quality products to clinics for over 50 years and is recognized as an industry leader. With knee-chest positioning, the foot support can be easily reconfigured, and the table properly positioned, to set up the knee-chest position for colon and rectal examinations and procedures. Available in 7 standard Ritter colors.

4443-75-019

Midmark 75e Procedure Table

Ritter 244 Bariatrics Treatment Table

With an 850 pound patient weight capacity, the Ritter 244 is ready, willing, and able to safely lift your special needs patients time and time again. By lowering the seat to 18 inches, the Ritter 244 performs this sometimes difficult task. It becomes a very simple routine requiring minimal assistance from you and your staff. The patient's dignity is maintained and the likelihood of injury is greatly reduced, thus providing efficient patient care. The Ritter 244 raises the seat to a height of 34 inches, effectively bringing the patient to you while helping minimize the stress and strain on your back. By having the patient in the right position, the exam can be completed properly and efficiently. The Ritter 244 features a 32-inch wide seat that offers unsurpassed patient comfort and support for your special needs patients. The seamless design of the upholstery looks great and offers an easy-to-clean surface. The thick foam padding with built-in pillow provides the comfort your patient deserves. Available in 7 standard Ritter colors.



Shown with optional Adjustable Arm System

4443-244

Ritter 244 Bariatrics Treatment Table

BrewerAccess EXAM TABLE

Brewer Access Exam Table is the most innovative Exam table on the market. Designed using extensive market research with healthcare professionals, the Brewer Access Exam Table specifically addresses the unique needs of doctors, nurses, and patients. Brewer Access provides the most advanced safety, comfort and versatility for your practice. The Brewer Access features a large, adjustable 4-leg patient step that increases patient safety and comfort. The patented pass-through side drawers can be accessed from the right or left side of the table. The Brewer Access also handles patients up to 500 lbs., has a 5 year warranty, and a simple pneumatic backrest for easy patient positioning.



- Large, adjustable 4-leg patient step increases patient safety and comfort
- Patented pass-through side drawers can be opened from right or left side of table
- Largest storage capacity available
- Safely handles patients up to 500 lbs.
- Simple pneumatic backrest for easy patient positioning
- Comfortable, seamless upholstery with easy to clean surface
- Additional paper storage under backrest: holds 18" or 21" table paper
- Adjustable ergonomic stirrups
- 5 year warranty
- 18 standard upholstery colors to match any exam room décor

0985-5001 Access™ Exam Table with Pelvic Tilt and Drawer Heater

BrewerAccess High-Low EXAM TABLE

Brewer has done it again. Introducing the Brewer Access High-Low Exam Table; premiering the industry's first true chair to table design that easily take patients from consultation to examination. The Brewer Access High-Low Exam Table introduces the first table of its kind to offer abundant storage capacity with Brewer's signature pass-through drawer system. Safety grab bars; 18" wheelchair transfers; a pass-through work surface; 450 lb. weight capacity; and customizable two-tone plush upholstery are just a few of the unique features you won't find anywhere else.



- Effortless chair-to-table design seamlessly takes patient from consultation to examination
- 18" low height for easy patient on and off
- Patented pass-through side drawers can be opened from right or left side of table
- Safety grab bars provide patient added safety and comfort and conveniently swing out for wheelchair transfers or closer access to patient
- Largest storage capacity available
- Pass through work surface
- Return to chair feature quickly and easily takes table back to lowest chair position in one, simple step (on power back model only).
- Safety on/off switch disables foot control to prevent patients or children from moving table when unattended.
- Safely handles patients up to 450 lbs.
- Simple pneumatic backrest for easy patient positioning on manual models
- Comfortable, seamless upholstery with easy to clean surface
- Additional paper storage under backrest: holds up to 7 rolls of 18" or 21" table paper
- Adjustable ergonomic stirrups
- 3 year warranty
- 18 standard upholstery colors to match any exam room décor
- Certifications: UL listed, CUL listed
- Options: Power back / return to chair, Premium plush upholstery, 5° pelvic tilt; 60-Watt drawer heater in front top drawer

0985-6500 Access High-Low Exam Table, Model 6500 includes Power Back and Return to Chair

imeco
Private Label
Low cost without compromising quality

**Saving money
is no small task -
Let us help!**

Look for the IMCO logo
throughout this catalog.
www.imcoinc.com

BrewerAssist

POWER PROCEDURE TABLE

Having set out to design the most technologically advanced power procedure table available, The Brewer Company consulted with doctors and nurses across the country. The result is Brewer Assist Power Procedure Table-- the lowest, safest, and easiest to use power procedure table on the market. The Brewer Assist was the first to lower to 19", making wheelchair transfers and patient accessibility effortless. Brewer Assist also safely supports 450 pounds, has a full three-year warranty, and a convenient leg rest that extends an additional 5". It's easier for the physician and more comfortable for the patient.



- 19" height --lowest available
- Safely and easily transfers wheelchair bound patients
- Safely handles patient up to 450 pounds
- Extendable 5" leg rest provides comfort for taller patients
- Exclusive, infinitely adjustable 3-point pivot headrest
- 3-year warranty
- Easy to clean seamless upholstery
- 40" high height
- Holds 18" or 21" table paper
- Intuitive foot and hand controls
- 18 standard upholstery colors to match any exam room décor

0985-7000 ASSIST Power Procedure Table



Hausmann X-L Power-Back 600 lb Capacity Exam Table

- Backrest is motorized 0 to 75 degrees to facilitate Bariatric or Elderly patient positioning. No other table in this price range has this feature!
- The strongest slide-out Footstep on the market can accommodate patients up to 600 lbs.
- Footstep is 19 1/2" W x 17" D x 9" H with anti-slip treaded surface and (2) front legs for stability.
- Slide-out 20" wide leg rest with Pad extends full 18".
- Extra-wide 30" Top accommodates larger patients.
- Table height is comfortable 33" with toe recess on both sides of table.
- Heavy duty concealed stirrups adjust in length and are laterally adjustable into 4 positions. Heel rests are vinyl coated for patient comfort.
- Table is equipped with (2) front end Drawers and (3) right side Drawers. Molded polystyrene interiors for easy cleaning.
- Laminate Drawer fronts are 3/4" thick with White 3mm edges for protection and durability.
- Welded heavy-duty steel chassis with durable epoxy powder coated Gray Beige finish.
- One-piece vinyl upholstered top with High-Density urethane foam and contoured padded head section for patient comfort.
- Pelvic Tilt with dual side controls
- Includes Paper Dispenser and Cutter.
- Plastic Irrigation Pan
- Electrical outlet in rear of Table with Hospital grade plug.
- 110V, 60Hz, 5Amps
- 54-72" L (extended) x30"W x33"H
- Choice of 14 standard vinyl colors.

3052-4416 X-L Power-Back Exam Table

BrewerBasic

EXAM TABLE

We are proud to introduce the Brewer Basic Exam Table—a new entry level exam table designed with better features all at an excellent, everyday low price. The Brewer Basic Exam Table features a pneumatic cylinder, seamless upholstery, and 60+ % more storage capacity than similar competitor's product. We invite you to compare features. Compare price. Compare warranty. You will find the Brewer Basic Exam Table is clearly the best entry level exam table available.



- Pneumatic cylinder for easy patient positioning
- Contoured, seamless upholstery for easy cleaning
- 60+% more storage capacity
- 4 large drawers for convenient and abundant storage capacity
- Side drawers available on Right or Left side
- Pull-out step with non-skid mat
- Easy to adjust ergonomic stirrups
- Holds 18" or 21" table paper
- 18 standard upholstery colors to match any exam room décor
- 3 year warranty
- Weight Capacity: 325lbs.

0985-4000 Brewer Basic Exam Table

Hausmann Powermatic® Echo-Scan™ Table



- 3" extra-thick urethane foam top
- 10" wide x 12" deep drop-away section on durable piano hinge
- Sliding latch activates drop-away section
- Two direct-drive synchronized satin aluminum lift mechanisms
- UL Listed
- 400 lb. patient weight capacity
- Power height adjustment from 20" wheelchair height to 29"
- Hands-free foot control
- Choice of 14 upholstery colors.

3052-4790	Powermatic® Echo-Scan™ Table, 76"x 27"x 20"-29"
3052-4790-05	Powermatic® Echo-Scan™ Table, 76"x 27"x 20"-29", w/head rest
3052-4790-074	Powermatic® Echo-Scan™ Table, 76"x 27"x 24"-33", w/4" locking casters

Hausmann Powermatic® Treatment Table



- The Powermatic® electro-mechanical drive mechanism provides an infinite number of height positions. Power height adjusts from 26" to 38".
- Gas-spring pneumatic 30" backrest elevates to 75° automatically with lever or foot control.
- Patients can mount or dismount without a footstep. You can work faster and more efficiently without back strain or fatigue.
- 2" High-Density urethane foam vinyl top.
- "Hand Free" foot control operation.
- (2) Laminate drawers on nylon rollers.
- Hinged door storage compartment.
- Includes paper dispenser and Cutter.
- Thermal protection.
- Hospital grade plug.
- 110V, 60Hz, 3.5 Amps.
- Black base plate with (4) levelers.
- Shipped fully assembled
- Laminate – Folkstone Gray standard or choice of any other high-pressure laminate solid color or woodgrain. Call for color chart.
- Upholstery – 14 standard vinyl colors available

3052-4746	Powermatic® Treatment Table, lever control on one side, 76" L x 27" W x 26"-38" H
3052-4747	Hausmann Powermatic® Treatment Table, Foot control, 76" L x 27" W x 26"-38" H

Clinton Classic Line Treatment Tables



- 2" high-density urethane foam padding
- Dark Cherry or Natural finish
- Solid hardwood legs—not particleboard
- Secure H-brace construction
- Scratch and stain resistant surfaces
- 350 lbs. capacity
- Backrest standard
- Tops secured to frames with steel angles
- Premium, stain-resistant, woven, knit-backed vinyl upholstery
- Welt strips conceal upholstery strips
- 16 top colors
- 3-year limited warranty
- Full line of options available
- Many tables available for quick shipment
- 72" long x 31" high with 3 widths available: 24", 27" or 30".

1477-1020	Hardwood Legs, Laminate Shelf and Adjustable Backrest
1477-1010	Hardwood Legs and Adjustable Backrest
1477-1030	Hardwood Legs, Laminate Shelf, Storage Compartments and Adjustable Backrest
1477-1013	Hardwood Legs, Laminate Shelf, Two Drawers and Adjustable Backrest

Classic Line Tables Accessories

1477-002	Adjustable Headrest, 4-position adjustment, 21" long
1477-003	Slide-Out Shelf, 9" wide, accessible from either side of table
1477-004	Drawer, 14-1/2" deep x 16-1/4" wide x 3-1/4" high
1477-005	Extra Height, 36" maximum, state height when ordering
1477-006	Extra Length, 78" maximum, state height when ordering
1477-008	Armboard, adjustable height and position, for either side of table
1477-009	Nosehole, permits patient to lie down without turning head, 9" long x 2" high
1477-010	Stirrups, adjustable height, angle, length. Chrome-plated with plastic coated heels
1477-020	Small pillow, 14" x 12" x 3" thick
1477-030	Paper Dispenser, for paper rolls from 18" to 21" wide
1477-040	Paper Cutter, clear plastic
1477-060	Full Size Head Pillow, 14" x 21" x 3" thick
1477-077	Safety Strap, 2" x 92" long, secures with fasten hook & loop



Hausmann Basic H-Brace Treatment Table

- 2" thick high-density urethane foam top
- Resist-All vinyl upholstery finish
- H-Brace is recessed into table leg with unique 4-sided "lock-tite" joint
- High pressure laminate legs, apron and stretchers
- Natural Oak, Wild Cherry or Folkstone Gray finish plus choice of 14 upholstery colors.
- 350 lb. Capacity
- UL Tested

3052-4002	H-Brace Treatment Table, 72"x 24"x 31"
3052-4002-27	H-Brace Treatment Table, 72"x 27"x 31"
3052-4002-30	H-Brace Treatment Table, 72"x 30"x 31"
3052-4002-30-78	H-Brace Treatment Table, 78"x 30"x 31"
3052-4002-78	H-Brace Treatment Table, 78"x 24"x 31"



Hausmann Basic H-Brace Treatment Table with Storage Shelf

- 2" thick high-density urethane foam top
- Resist-All vinyl upholstery finish
- H-Brace with laminate storage shelf
- High pressure laminate legs, apron and stretchers
- Natural Oak, Wild Cherry or Folkstone Gray finish plus choice of 14 upholstery colors.
- 350 lb. Capacity
- UL Tested

3052-4024	H-Brace Treatment Table, 72"x 24"x 31"
3052-4024-27	H-Brace Treatment Table, 72"x 27"x 31"
3052-4024-30	H-Brace Treatment Table, 72"x 30"x 31"
3052-4024-30-078	H-Brace Treatment Table, 78"x 30"x 31"
3052-4024-078	H-Brace Treatment Table, 78"x 24"x 31"



Hausmann Orthopedic/Cast Table

- 2" thick high-density urethane foam top
- Resist-All vinyl upholstery finish
- 3 storage sections each with laminate interiors and 1 adjustable shelf
- Natural Oak, Wild Cherry or Folkstone Gray finish plus choice of 14 upholstery colors
- 350 lb. Capacity
- UL Tested

3052-4073 Orthopedic/Cast Table, 78"x 30"x 31"



Hausmann Hi-Line Treatment Table

All purpose medical table for treatment, examination or therapy.

- Sturdy panel legs with durable laminate finish.
- Folkstone Gray edges on legs and shelf
- 2" High-Density urethane foam top.
- Resist-AllTM vinyl upholstery finish.
- Laminate – Folkstone Gray is standard color for the upper apron and edging on legs and shelf.

Model 4206 Special Features:

- Full width laminate storage shelf.
- Shelf matches leg finish.

3052-4206 Model 4206 Hi-Line Treatment Table, 72" L x 27" W x 31" H

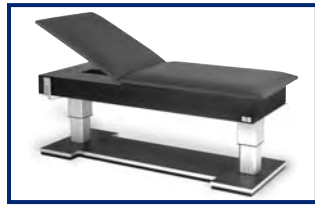
Model 4246 Special Features:

- (4) Sliding laminate doors (2 on each side) providing "pass-thru" access to enclosed storage space.

- Doors match leg finish

3052-4246 Model 4246 Hi-Line Treatment Table, 72" L x 27" W x 31" H

Hausmann Bariatric Hi-Lo Treatment Table with Power Backrest



- Extra-wide 32" top accommodates larger patients up to 600 Lbs.
- Power height motorized elevation from 20" wheelchair height to 29" high.
- Two direct-drive synchronized lift actuators provide unsurpassed power.
- Motorized Power Backrest elevates 0 to 75 degrees for ease of patient positioning.
- Convenient Hand Control operation
- 2" High-Density urethane foam top for patient comfort.
- Black laminate frame and base plate, with aluminum trim and levelers.
- Hospital grade plug
- 110V, 60Hz, 3.5 Amps
- UL and CUL Listed
- Choice of 14 standard vinyl colors
- Options: 27 - Paper Dispenser & Cutter Combo
595 – 600 lb. Cap. Digital Scale (factory installed)

3052-4795

Bariatric Hi-Lo Treatment Table with Power Backrest, 78" x 32" x 20"-29"

Hausmann Extra-Wide 800 lb. Capacity Bariatric Treatment Table



- 3"extra-thick High- Density urethane foam top for bariatric use.
- Extra-wide 34" X 78" long upholstered top.
- Reinforced Oak laminated wood construction can accommodate patients up to 800 Lbs.
- (3) Storage cabinets, each with laminate interiors and (1) adjustable shelf.
- Doors have concealed, self-closing, Euro-hinges.
- 78" L x34"W x30"H
- Natural Oak laminate; Choice of 14 standard vinyl colors
- Options: 27 - Paper Dispenser & Cutter Combo
595 – 600 lb. Cap. Digital Scale (factory installed)

3052-4074

Extra-Wide 800 lb. Capacity Bariatric Table



Hausmann Bariatric Treatment Table

- (6) High pressure laminate legs and a sturdy plywood sub-top.
- H-Brace with full width laminate shelf. 4" Clearance under shelf.
- 2" High Density urethane foam top.
- 600 lbs. patient weight capacity
- 78" L x 30" W x 26" H
- Natural Oak laminate; Choice of 14 standard vinyl colors
- Options: 27 - Paper Dispenser & Cutter Combo
595 – 600 lb. Cap. Digital Scale (factory installed)

3052-4086

Bariatric Treatment Table



Hausmann Pete's Pickup™ Pediatric Table

- Child friendly molded blue plastic truck chassis
- Built-in toddler car seat with dual steering wheels.
- (2) Fixed wheels and black cabinet base trim.
- (1) Blue laminate drawer on nylon rollers.
- (2) Blue laminate doors on concealed, self-closing Euro-hinges.
- Yellow vinyl 52" x 24" padded upholstered top with 18" x 18" legrest extension
- Legrest elevates up to 90 degrees and extends top length to 70", w/Chassis overall length is 78" extended
- Includes Paper Dispenser and Cutter.

3052-4975

Pete's Pickup™ Pediatric Table

Hausmann CANDY LAND™ Exam Table

- The colorful CANDY LAND™ characters are permanently embedded into the blue high-pressure laminate door and drawer fronts.
- (3) 18" wide laminate drawers with nylon rollers.
- (3) 18" wide storage doors, each with (1) adjustable laminate shelf.
- #4962 table includes "Castle" wall plate. "Castle" graphics are permanently embedded into high pressure laminate. "Castle" wall plate requires easy wall attachment.
- Removable 70" x 24" upholstered top pad in 718 Navy blue
- All table surfaces are covered in high-pressure laminates in decorative colors as shown.
- Concealed, self-closing Euro-door hinges
- Easy-to-clean laminate interiors with shelf.
- Three-sided 4" high protective laminate rim with 39" long measuring ruler on backsplash.
- Includes Paper dispenser and Cutter.
- 2" High-Density urethane foam top.
- Removable vinyl upholstered top pad attached with Velcro-brand fasteners.



3052-4961 Candy Land™ Table w/o Plate, 72"W x 24"D x 34"H
 3052-4962 Candy Land™ Table with Plate, 72"W x 24"D x 58"H

Hausmann Pediatric Table

- Weigh, measure and examine the infant on one convenient unit
- 39" long built-in infantometer with sliding Lucite fold-away flap
- Comfortably padded vinyl top has a protective rim on 3 sides
- Cabinet has 2 drawers and 2 doors
- Built-in paper dispenser and cutter. Holds 14" wide table paper
- Kilo-Pounds balance beam scale
- Balance Beam Scale weight up to 130 lbs. Digital Scale weight up to 40 lbs.
- Locking lever to "lock-in" top (Balance Beam only)
- Folkstone Gray or choice of any Formica® solid color or woodgrain finish plus choice of 14 upholstery colors.



3052-4943 Pediatric Table, 43"x 24"x 36"
 3052-4945 Pediatric Table, Digital Scale, 43"x 24"x 36"

Hausmann Econo-Line™ Pediatric Table

- Weigh, measure and examine the infant on one convenient unit
- 39" long built-in infantometer with sliding Lucite fold-away flap
- Comfortably padded vinyl top has a protective rim on 3 sides
- Cabinet has 2 drawers and 2 doors
- Built-in paper dispenser and cutter. Holds 14" wide table paper
- Digital scale with easy reading display; lb. and oz..
- Scale weighs up to 40 lbs.
- Kilo-Pounds switch. Auto power shut-off
- Electric and battery operation. 9V AC adapter included. 6 AA not included
- 1 polystyrene drawer and fixed shelf
- Paper dispenser and side rail cutter
- Folkstone Gray laminate plus choice of 14 upholstery colors.



3052-4941 Econo-Line™ Pediatric Table, 43"x 24"x 36"

Clinton Pediatric Table

Nothing relaxes a young patient more than sitting atop a big yellow school bus or bright red fire truck "manned" by cheery dalmations or choose an Australian outback themed buggy. The fun series is jam-packed with what children love- bright colors and friendly animal faces. Features include: easy to clean laminate surfaces; graphics on 3 sides protected with a clear overlay; durable Perma Block top coated vinyl; fire-rated 2" thick foam padding; doors mounted with Euro-Style hinges; large storage capacity; 11 colorful laminates; 20 colors of vinyl and a full line of accessories and graphics are available.



1477-720 Zoo Bus with Jungle Friends, 4 door storage & 3 adjustable shelves, 72"L x 34"H x 27" W
 1477-730 Engine K-9 with Dalmation Firefighters, 4 door storage, 3 adjustable shelves, 72"L x 34"H x 27"W



Clinton Theme Series Treatment Tables

- Clinton original themes (Rainforest Follies, Cool Pals, Space Place, Dino Days, Ocean Commotion, Alley Cats and Dogs)
- Easy to clean laminate surfaces
- All graphics are permanently embedded in the high pressure laminate and will not peel off
- 2" of firm foam padding
- 4 door storage with 2 adjustable shelves
- Slate Gray ends and backs
- Scratch and mar resistant surfaces
- Chip resistant PVC edges
- Premium, stain-resistant, woven, knit-backed vinyl upholstery

1477-7932

Clinton Rainforest Follies Treatment Table (pictured)

Clinton Theme Series Pediatric Scale Table

"A picture is worth a thousand words." And Clinton's Theme Series Scale tables are pictures of fun that need no words.

Choose from Clinton's original theme designs (Rainforest Follies, Cool Pals, Space Place, Dino Days, Ocean Commotion, Alley Cats and Dogs). Brightly adorned and bursting with color, these whimsical scenes will enchant and delight young patients

and parents alike.

1477-7836

Clinton Ocean Commotion Scale Table

Focus on Your Patients, Not Their Paperwork

Finally, your practice can realize the promise of truly effective Electronic Medical Records. So you can focus on the things that are truly important.

StreamlineMD is a complete solution that brings a unique combination of accountability, simplicity, and affordability to even the busiest practice.

- ■ ■ Software consistently ranked by independent analysts as among the best EMR solutions.
- ■ ■ Training, implementation and ongoing support provided by responsive, local professionals.
- ■ ■ An off-site technology solution that gets the hardware – and its accompanying costs and headaches – out of your office.

For information, contact your local IMCO distributor representative or visit www.propractica.com.

StreamlineMD

